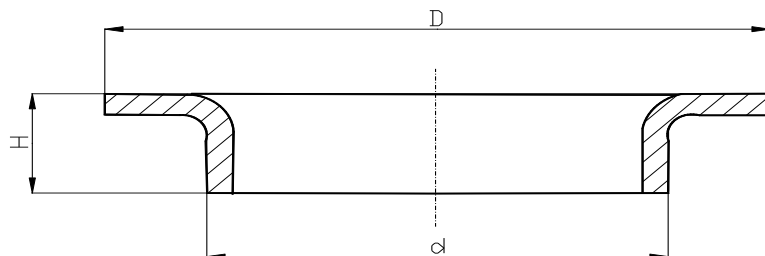


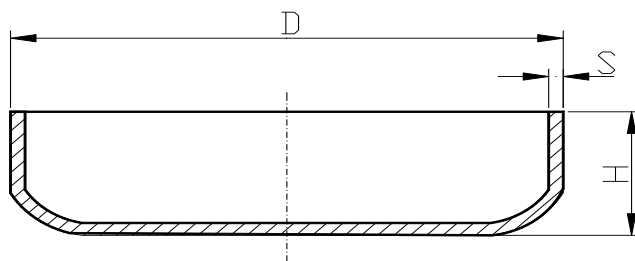
## COLLARS



DN	D	d	Th.	H
15	43	21,3	2	7
20	58	26,9	2	8
25	68	33,7	2-2.5-3	9
32	78	42,4	2-2.5-3	10
40	88	48,3	2-2.5-3	10
50	102	60,3	2-2.5-3	12
65	122	76,1	2-2.5-3	12
80	138	88,9	2-2.5-3	12
100	158	114,3	2-2.5-3	16
125	185	139,7	2-2.5-3	16
150	212	168,3	2-2.5-3	17
200	270	219,1	2-2.5-3	18

Available in stainless steel AISI 304L - AISI 316L

## BOTTOMS



DN	Inches	D	S	H
32	1"1/4	42,4	2	19
40	1"1/2	48,3	2	20
50	2"	60,3	2	22
65	2"1/2	76,1	2	25
80	3"	88,9	2	28
90	3"1/2	101,6	2	25
100	4"	114,3	2	31
125	5"	139,7	2	35
150	6"	168,3	2	40

Available in stainless steel AISI 304L - AISI 316L