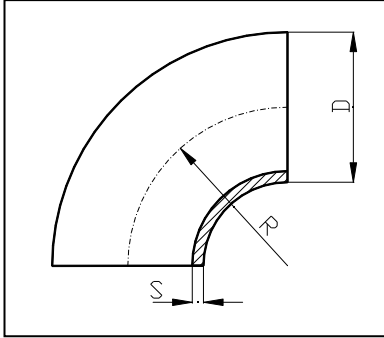


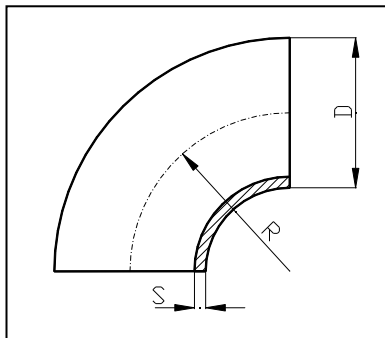
CURVE A SALDARE



CURVE 90° ISO

DN	D	R	SPESORE	
10	3/8"	17,0	25,8	1,5-2,0
		18,0	27,0	1,5-2,0
		20,0	30,0	1,5-2,0
15	1/2"	21,3	38,0	1,5-2,0-2,5
		23,0	34,5	1,5-2,0
		25,0	33,0	1,5-2,0
20	3/4"	26,9	39,0	1,5-2,0-2,5
		28,0	37,0	1,5-2,0
		30,0	33,5	1,5-2,0-2,5-3,0
		32,0	48,0	1,5-2,0-2,5-3,0
25	1"	33,0	49,5	1,5-2,0-2,5-3,0
		33,7	38,0	1,5-2,0-2,5-3,0
		34,0	51,0	1,5-2,0-2,5-3,0
		38,0	45,0	1,5-2,0
32	1 1/4"	40,0	60,0	1,5-2,0-2,5-3,0
		42,4	47,6	1,5-2,0-2,5-3,0
		43,0	64,5	1,5-2,0-2,5-3,0
		44,5	51,0	1,5-2,0-2,5-3,0
40	1 1/2"	48,3	57,1	1,5-2,0-2,5-3,0
		50,0	75,0	1,5-2,0-2,5-3,0
		52,0	78,0	1,5-2,0-2,5-3,0

DN	D	R	SPESORE			
50	2"	53,0	78,0	1,5-2,0-2,5-3,0		
		54,0	75,0	1,5-2,0-2,5-3,0		
		57,0	77,0	1,5-2,0-2,5-3,0		
		60,3	76,2	1,5-2,0-2,5-3,0		
65	2 1/2"	63,0	94,5	1,5-2,0-2,5-3,0		
		70,0	92,0	1,5-2,0-2,5-3,0		
		73,0	95,0	1,5-2,0-2,5-3,0		
80	3"	76,1	96,0	1,5-2,0-2,5-3,0		
		80,0	120,0	1,5-2,0-2,5-3,0		
		84,0	126,5	1,5-2,0-2,5-3,0		
		88,9	114,5	1,5-2,0-2,5-3,0		
100	4"	100,0	150,0	1,5-2,0-2,5-3,0		
		101,6	133,5	1,5-2,0-2,5-3,0		
		104,0	150,0	1,5-2,0-2,5-3,0		
125	5"	108,0	142,5	1,5-2,0-2,5-3,0		
		114,3	142,5	2,0-2,5-3,0-4,0		
150	6"	114,3	142,5	2,0-2,5-3,0-4,0		
		125	5"	139,7	190,5	2,0-2,5-3,0-4,0
200	8"	150	6"	168,3	228,5	2,0-2,5-3,0-4,0
		200	8"	219,1	305	2,0-2,5-3,0-4,0
250	10"	250	10"	273	381	2,5-3,0-4,0
		300	12"	323,9	457,2	2,5-3,0-4,0



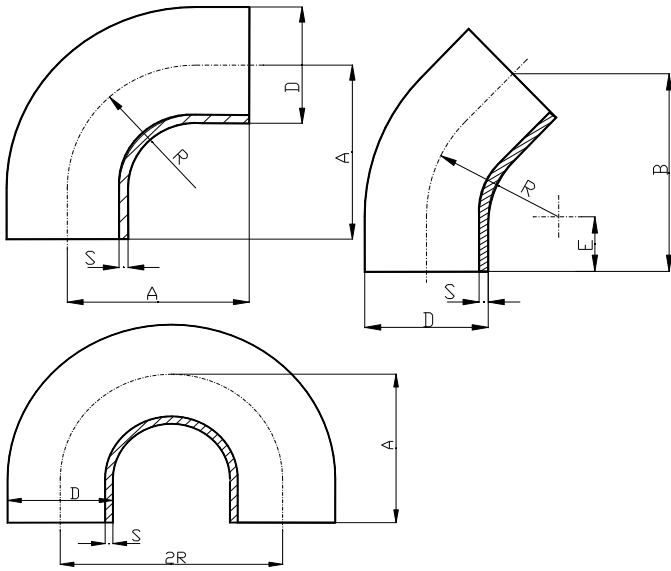
CURVE 90° ANSI

DN	D	R	SPESORE					
			SCH. 5	SCH. 10	SCH.40	SCH. 80	SCH. 160	
10	3/8"	17,2	18,5		1,65	2,31	3,10	
15	1/2"	21,3	38,1		2,11	2,77	3,73	4,75
20	3/4"	26,7	28,6	1,65	2,11	2,87	3,91	5,54
25	1"	33,4	38,1	1,65	2,77	3,38	4,55	6,35
32	1 1/4"	42,2	47,6	1,65	2,77	3,56	4,85	6,35
40	1 1/2"	48,3	57,1	1,65	2,77	3,68	5,08	7,14
50	2"	60,3	76,2	1,65	2,77	3,91	5,54	8,71
65	2 1/2"	73,0	95,2	2,11	3,05	5,16	7,01	9,52
80	3"	88,9	114,3	2,11	3,05	5,49	7,60	11,13
90	3 1/2"	101,6	133,3	2,11	3,05	5,74	8,08	
100	4"	114,3	152,4	2,11	3,05	6,02	8,56	13,49
125	5"	141,3	190,0	2,77	3,40	6,55	9,52	15,87
150	6"	168,3	228,6	2,77	3,40	7,11	10,97	18,24
200	8"	219,1	304,8	2,77	3,76	8,18	12,70	22,01
250	10"	273,0	381,0	3,40	4,19	9,27	12,70	28,57
300	12"	323,9	457,2	3,96	4,57	9,52	12,70	33,32
350	14"	387,3	533,5	3,96	4,76	9,52	12,70	35,71

Disponibili in acciaio inox AISI 304L - AISI 316L

CURVE A MANDRINARE

CURVE A 45°- 90°-180°



<i>DIN</i>	<i>D</i>	<i>S</i>	<i>A</i>	<i>B</i>	<i>R</i>	<i>E</i>
25	28	1,25	70	73	43	24
32	34	1,25	80	83	52	27
40	40	1,25	90	89	60	27
50	52	1,25	100	103	72	30
65	70	2	110	108	85	30
80	85	2	130	120	93	30
<i>POLLICI</i>	<i>D</i>	<i>S</i>	<i>A</i>	<i>B</i>	<i>R</i>	<i>E</i>
1"	25,4	1,25	75	80	39	25
1 1/2"	38,1	1,25	90	105	56	30
2"	50,8	1,25	100	103	72	30
2 1/2"	63,5	1,5	115	115	84	35
3"	76,2	2	130	135	85	35
4"	101,6	2	150	150	110	35

Disponibili in acciaio inox AISI 304L - AISI 316L