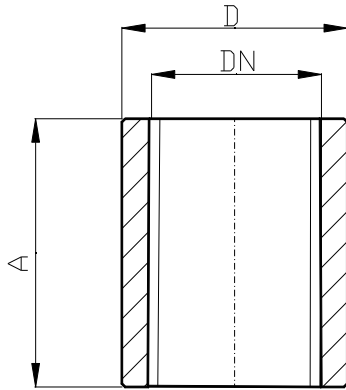


## SOCKETS



DN	D	A
1/8"	14	18
1/4"	18	18
3/8"	22	20
1/2"	26/28	25
3/4"	32/35	30
1"	40	35
1 1/4"	48/50	40
1 1/2"	55	40
2"	68/70	43
2 1/2"	83/85	45
3"	96/98	45
3 1/2"	114	50
4"	125	60

Available in stainless steel AISI 304L - AISI 316L