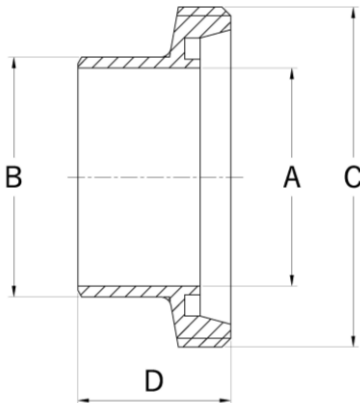


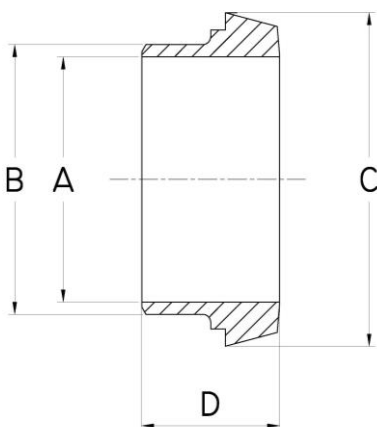
RACCORDI DIN 11851-52

BOCCHETTONE FEMMINA A SALDARE



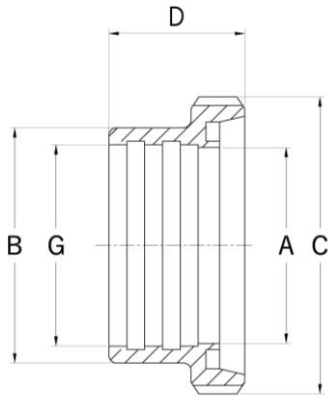
DN	A	B	C	D
10	10	15	RD 28X1/8"	21
15	16	21	RD 34X1/8"	21
20	20	25	RD 44X1/6"	24
25	26	31	RD 52X1/6"	29
32	32	37	RD 58X1/6"	32
40	38	43	RD 65X1/6"	33
50	50	55	RD 78X1/6"	35
60	57	62	RD 85X1/6"	38
65	66	72	RD 95X1/6"	40
80	81	87	RD 110X1/4"	45
100	100	106	RD 130X1/4"	54
125	125	132	RD 160X1/4"	46
150	150	157	RD 190X1/4"	50

BOCCHETTONE MASCHIO A SALDARE



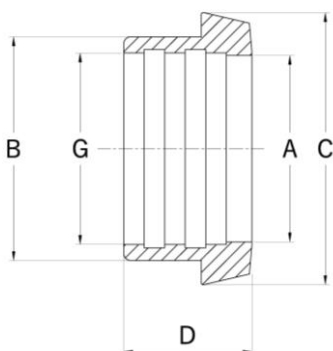
DN	A	B	C	D
10	10	15	22	17
15	16	21	28	17
20	20	25	36	18
25	26	31	44	22
32	32	37	50	25
40	38	43	56	26
50	50	55	68	28
60	57	62	76	30
65	66	72	86	32
80	81	87	100	37
100	100	106	121	44
125	125	132	150	34
150	150	157	176	37

BOCCHETTONE FEMMINA A MANDRINARE



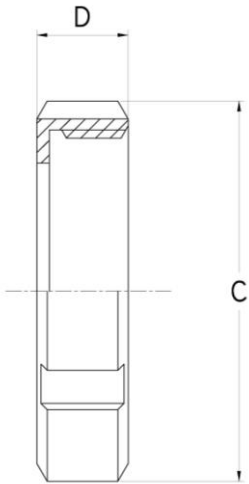
DN	A	B	C	D	G
10	10	18	RD 28X1/8"	21	12,2
15	16	24	RD 34X1/8"	21	18,2
20	20	30	RD 44X1/6"	24	22,2
25	26	35	RD 52X1/6"	29	28,2
32	32	41	RD 58X1/6"	32	34,2
40	38	48	RD 65X1/6"	33	40,2
50	50	61	RD 78X1/6"	35	52,2
60	57	69	RD 84,5X1/6"	36	60,5
65	66	79	RD 95X1/6"	40	70,3
80	81	93	RD 110X1/4"	44	85,3
100	97,6	114	RD 130X1/4"	54	102

BOCCHETTONE MASCHIO A MANDRINARE



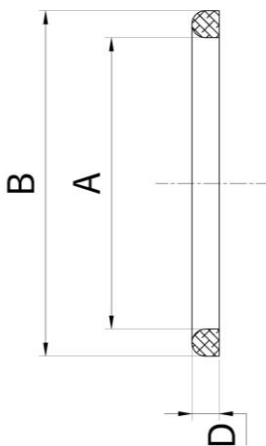
DN	A	B	C	D	G
10	10	18	22	17	12,2
15	16	24	28	17	18,2
20	20	30	36	18	22,2
25	26	35	44	22	28,2
32	32	41	50	25	34,2
40	38	48	56	26	40,2
50	50	61	68	28	52,2
60	57	69	76	31	60,5
65	66	79	86	32	70,3
80	81	93	100	35	85,3
100	97,6	114	121	42	102

GIRELLA



DN	C	D
10	38	18
15	44	18
20	54	20
25	63	21
32	70	21
40	78	21
50	92	22
60	99	24
65	112	25
80	127	30
100	148	31

GUARNIZIONE IN GOMMA



DN	A	B	D
10	12	20	4,5
15	18	26	4,5
20	23	33	4,5
25	30	40	5
32	36	46	5
40	42	52	5
50	54	64	5
60	62	72	5
65	71	81	5
80	85	95	5
100	104	114	5

Tutta la serie DIN 11851-52 è disponibile in acciaio inox Aisi304L e Aisi316L