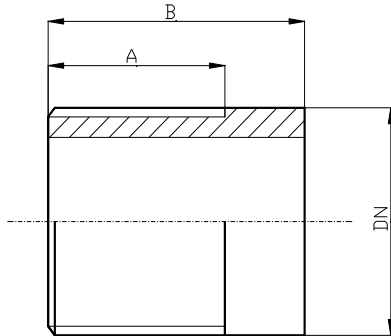


TRONCHETTI



DN	A	B
1/8"	10	20
1/4"	10	20
3/8"	14	22
1/2"	17	25
3/4"	18	30
1"	20	35
1 1/4"	20	40
1 1/2"	20	45
2"	22	45
2 1/2"	25	50
3"	25	50
3 1/2"	28	50
4"	30	60

Disponibili in acciaio inox AISI 304L - AISI 316L